

FELDSPAR

An all-caps display typeface  
based on type from the Chicago  
Field Museum drawn by Jacob  
Waites in 2024

FELDSPAR

FELDSPAR WIDE

FELDSPAR WIDE

FELDSPAR WIDE

FELDSPAR WIDE

FELDSPAR WIDE

FELDSPAR WIDE

FELDSPAR WIDE

WIDE

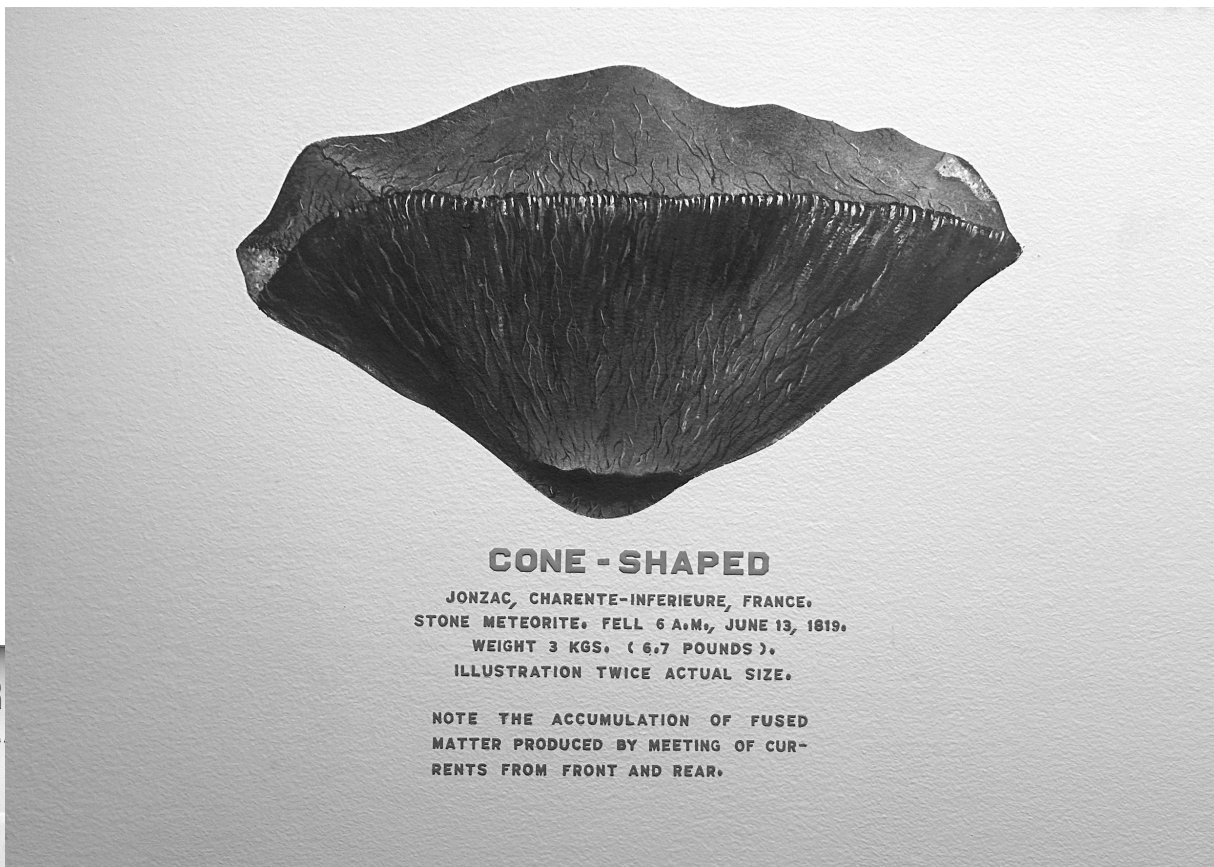
WIDE

# FELDSPAR WIDE

Type specimen for **version 1.00**

Weights: 1 Glyph count: 105

Feldspar Wide is an all caps display face that seeks to preserve letterforms from Geological and paleontological exhibits at the Chicago Field Museum. It has caps letterforms and select symbols included. The field museum meteorite exhibits featured an all-caps, sharp, bold-face cut out of vinyl. Many of the letterforms were very small, but the sharpness of their interior miters made it very readable from far away. I tried to keep this while restoring even widths and order to the forms.



## CONE - SHAPED

JONZAC, CHARENTE-INFERIEURE, FRANCE.  
 STONE METEORITE. FELL 6 A.M., JUNE 13, 1819.  
 WEIGHT 3 KGS. ( 6.7 POUNDS ).  
 ILLUSTRATION TWICE ACTUAL SIZE.

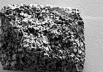
NOTE THE ACCUMULATION OF FUSED  
 MATTER PRODUCED BY MEETING OF CUR-  
 RENTS FROM FRONT AND REAR.

FOR  
 DEPEND L

PLAGIOCLASE

WITH QUARTZ

QUARTZ - DIORITE



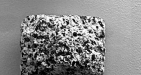
MONZONITE PORPHYRY



MONZONITE PORPHYRY



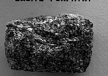
QUARTZ - DIORITE PORPHYRY



LATITE PORPHYRY



DACITE PORPHYRY



FELSITE

"FELSITE" IS NOT A NAME FOR ANY PARTICULAR SPECIES OF FELSPAR. IT IS A TEXTURAL TERM, APPLIED TO ALL THOSE VERY FINE-TEXTURED FELDSPATHIC IGNEOUS ROCKS, WHICH OBTAIN BUT LITTLE RECOGNITION TO THE UNARMED EYE OF THEIR ACTUAL MINERALOGICAL COMPOSITIONS, SUCH AS CRYSTALLINITY, DUCTILITY, AND ADHESIVENESS.

FELSITE



CONE - SHAPED

SPHERICAL, CONICALLY-TERMINATED, METEORITE SPECIMENS, SUCH AS THIS ONE, ARE OFTEN QUARTZITE IN THEIR COMPOSITION.

NOTE THE ACCUMULATION OF FUSED MATTER PRODUCED BY MEETING OF CURRENTS FROM FRONT AND REAR.

PEAR-SHAPED

PEAR-SHAPED METEORITE SPECIMENS, SUCH AS THIS ONE, ARE OFTEN QUARTZITE IN THEIR COMPOSITION.

NOTE THE ACCUMULATION OF FUSED MATTER PRODUCED BY MEETING OF CURRENTS FROM FRONT AND REAR.

CUBE - SHAPED

CUBE-SHAPED METEORITE SPECIMENS, SUCH AS THIS ONE, ARE OFTEN QUARTZITE IN THEIR COMPOSITION.

NOTE THE ACCUMULATION OF FUSED MATTER PRODUCED BY MEETING OF CURRENTS FROM FRONT AND REAR.

PEAR-SHAPED

PEAR-SHAPED METEORITE SPECIMENS, SUCH AS THIS ONE, ARE OFTEN QUARTZITE IN THEIR COMPOSITION.

NOTE THE ACCUMULATION OF FUSED MATTER PRODUCED BY MEETING OF CURRENTS FROM FRONT AND REAR.

COLUMN - SHAPED

COLUMN-SHAPED METEORITE SPECIMENS, SUCH AS THIS ONE, ARE OFTEN QUARTZITE IN THEIR COMPOSITION.

NOTE THE ACCUMULATION OF FUSED MATTER PRODUCED BY MEETING OF CURRENTS FROM FRONT AND REAR.

PEAR-SHAPED

PEAR-SHAPED METEORITE SPECIMENS, SUCH AS THIS ONE, ARE OFTEN QUARTZITE IN THEIR COMPOSITION.

NOTE THE ACCUMULATION OF FUSED MATTER PRODUCED BY MEETING OF CURRENTS FROM FRONT AND REAR.

SHIELD-SHAPED

SHIELD-SHAPED METEORITE SPECIMENS, SUCH AS THIS ONE, ARE OFTEN QUARTZITE IN THEIR COMPOSITION.

NOTE THE ACCUMULATION OF FUSED MATTER PRODUCED BY MEETING OF CURRENTS FROM FRONT AND REAR.

SHIELD-SHAPED

SHIELD-SHAPED METEORITE SPECIMENS, SUCH AS THIS ONE, ARE OFTEN QUARTZITE IN THEIR COMPOSITION.

NOTE THE ACCUMULATION OF FUSED MATTER PRODUCED BY MEETING OF CURRENTS FROM FRONT AND REAR.



CONE - SHAPED

CONE-SHAPED METEORITE SPECIMENS, SUCH AS THIS ONE, ARE OFTEN QUARTZITE IN THEIR COMPOSITION.

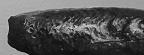
NOTE THE ACCUMULATION OF FUSED MATTER PRODUCED BY MEETING OF CURRENTS FROM FRONT AND REAR.



SHIELD-SHAPED

SHIELD-SHAPED METEORITE SPECIMENS, SUCH AS THIS ONE, ARE OFTEN QUARTZITE IN THEIR COMPOSITION.

NOTE THE ACCUMULATION OF FUSED MATTER PRODUCED BY MEETING OF CURRENTS FROM FRONT AND REAR.



COLUMN - SHAPED

COLUMN-SHAPED METEORITE SPECIMENS, SUCH AS THIS ONE, ARE OFTEN QUARTZITE IN THEIR COMPOSITION.

NOTE THE ACCUMULATION OF FUSED MATTER PRODUCED BY MEETING OF CURRENTS FROM FRONT AND REAR.

# ARCHIVAL TYPE

## UPPERCASE

A	B	C	D	E	F	G	H	I	J	K	L	M
N	O	P	Q	R	S	T	U	W	V	X	Y	Z

## FIGURES

0	1	2	3	4	5	6	7	8	9
---	---	---	---	---	---	---	---	---	---

## PUNCTUATION

.	,	/	;	:	?	!	#	*	/	\	-	-
—	(	{	)	}	[	]	'	@	"	&	€	©
™	°	¢		€	\$	£	¥	+	-	÷	x	~
=	%	^	↑	↖	↓	↗	←	↘	→	↙	↔	

## STYLISTIC ALTERNATIVES

**10,000** → **10,000**  
ALTERNATE COMMA (DEEP)

**BITS & BOBS** → **BITS & BOBS**  
ALTERNATE AMPERSAND

ARCHIVAL TYPE

FELDSPAR WIDE (REGULAR WEIGHT)

30.471649, -86.538277

**FIELDING QUESTIONS**

**98° OF WARMING**

**HIGH MAGNETIC FIELD**

**ELECTRICAL UTILITIES**

**→ ATRIUM ↙ LIBRARY**

**SYNTHETIC FIBERS**

**READY & WILLING**

**\$50,000,000 DUE**

**30° 28' 17.9364" N, 86° 32' 17.7972" W**

ARCHIVAL TYPE

FELDSPAR WIDE (REGULAR WEIGHT)

ISOTOPEES

MIDNIGHT

NATIONAL

SQUEEZE

WEAVING

ARCHIVAL TYPE

FELDSPAR WIDE (REGULAR WEIGHT)

**ALGORITHMIC  
PORPHYRITIC  
ORBICULAR  
CONE-SHAPED  
STRIPED BAND  
INCLUSIVITY  
SIZZLING 7'S  
GHOST-KILLER**

ARCHIVAL TYPE

FELDSPAR WIDE (REGULAR WEIGHT)

**AA BB CC DD**  
**EE FF GG HH II**  
**JJ KK LL MM**  
**NN OO PP QQ**  
**RR SS TT UU**  
**VV WW XX YY**  
**ZZ**